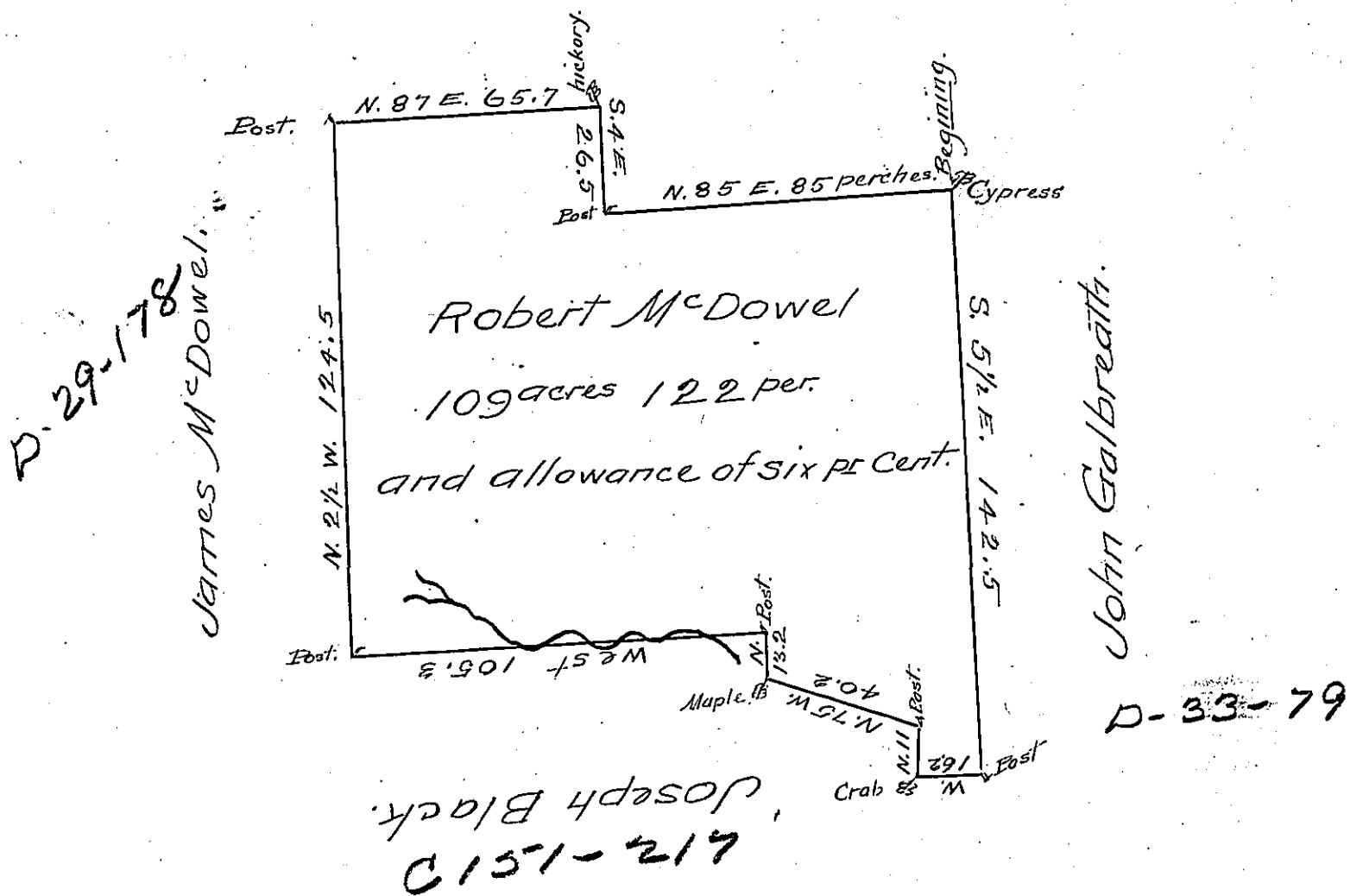


David McDowel.



The above is a draft of one hundred and nine acres and 122 perches of land with the usual allowance of six per cent &c. Situate on the waters of wolf creek, in wolf creek Township Mercer County, being part of a tract of Land settled and improved by the said Robert McDowel, situated and bounded as above, a part of which tract has been patented to Joseph Black. Surveyed this 17<sup>th</sup> day of December A.D. 1822 to Robert McDowel in pursuance of his actual Settlement. Upon this part of this tract there is a House and barn erected, and about 30 acres cleared and Cultivated by said McDowel &c.

Samuel Cochran Esq. }  
 Surveyor General - } A. Brown D.S.

IN TESTIMONY that the above is a copy of the original remaining on file in the Department of Internal Affairs of Pennsylvania, made conformably to an Act of Assembly approved the 16th day of February, 1833, I have hereunto set my Hand and caused the Seal of said Department to be affixed at Harrisburg, this twenty seventh day of January 1906.

*Lucas R. Brown*  
 Secretary of Internal Affairs.